

- **When there are random areas of fading:** Areas exposed to more UV light may fade sooner than those that are more protected. In some cases, a refreshed coat of Capture® Log Stain may be necessary. When that happens, apply a new coat of Capture® Log Stain to the faded area, feathering into surrounding areas to create a seamless look. Allow the Capture® Log Stain to dry (4-12 hours, depending on temp and humidity), then follow with a top coat of Cascade®.

While you're at it, plan to inspect your home each spring and fall for any problems with stain, caulking, chinking, rot, etc. Sashco's *Log Home Inspection Guide* (available at [www.sashco.com/diy/log-home-101](http://www.sashco.com/diy/log-home-101)) is an easy reference tool for these inspections.

## New Construction Notice

Within the first 12-18 months after Capture® Log Stain is first applied, it is important to inspect the home for any checks and cracks that have opened up in the logs. This is a common occurrence on new homes that are still adjusting to their new environment, with logs coming to their equilibrium moisture content. If you locate such areas, simply clean the surfaces with damp rags or bristle brushes to remove dirt, pollen, etc., and then apply more Capture® Log Stain to fill and seal the checks and cracks that have opened up in the logs. As long as the stain on the surface is in good condition, excess stain can be wiped away with a damp rag. Any check or crack wider than ¼" should be filled with a quality log home sealant, such as Sashco's Conceal® or Log Builder®.

## Clean-Up & Storage

Clean up tools and hands with warm water and soap. Leftover product can be stored if the lid is tightly replaced. Store in moderate temperatures (40° - 90°F, 4° - 32°C).

## Warranty

For a detailed description of the warranty and exclusions, please visit [www.sashco.com/legal-notice](http://www.sashco.com/legal-notice).

## First Aid

**CAUTION:** Avoid contact with eyes and skin. Do not breathe vapors. Do not take internally. In case of eye contact, flush thoroughly with water. In case of skin contact, flush thoroughly with water. If breathed in, move person into fresh air. If swallowed, do not induce vomiting. Call physician immediately.

**KEEP OUT OF REACH OF CHILDREN.**

**WARNING:** This product contains chemicals known to the State of California to cause cancer, birth defects or other reproductive harm.



10300 E. 107th Place • Brighton, CO 80601  
800-767-5656 • [www.sashco.com](http://www.sashco.com)

## Technical Data

*(Not to be considered specifications)*

### Available Colors

Autumn Aspen, Bronze Pine, Chestnut, Driftwood, Hazelnut, Natural, Sequoia, Wheat

### Coverage Rate

1st coat: 150-250 sq. ft. per gallon  
2nd and maintenance coats: 300-400 sq. ft. per gallon  
(As with all stains, coverage will vary depending upon roughness and porosity of the wood.)

### Recommended wet film thickness

3 mils remaining on the surface after soaking in (use a mil gauge if in doubt)

### Packaging

One-gallon and five-gallon pails

### Application Range

40°F (4°C) and rising to 90°F (32°C) and falling.  
In severe conditions (under 40°F (4°C) and/or 70%+ humidity), full rain resistance may take longer. Cover exterior walls with plastic if rainfall or snowfall is expected within 24 hours after application.

### VOCs

Less than 250g/L

### Compatibility

Sashco's Capture® is recommended for use with all other Sashco products. It also works well with most other caulking and chinking products. Please contact Sashco for details on specific compatibility questions.

### Dry Time

Dries to the touch in 30 min. or less in ideal weather. Will retain a slight tackiness until top-coated with Cascade®.

### Freeze-Thaw

Passes at least 5 cycles. Storage location should not be subject to freezing.

### Viscosity

Brookfield, LVF, 300-400 cp, #3 spindle, 6rpm

### pH

8.5-9.5

### Density

9.0-9.5 lbs./gal.

### Solids

28-33%

### Odor

Mild, sweet

*The data reported here is believed to be reliable.  
No warranty is made concerning its accuracy or the results obtained from its use.*

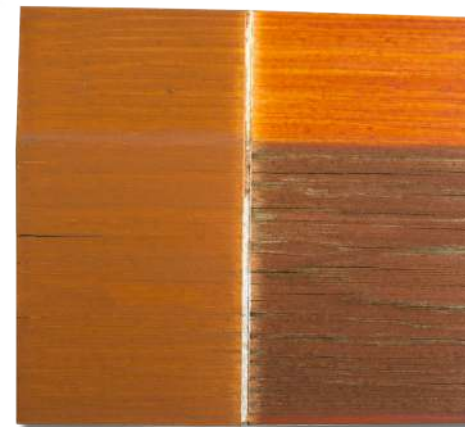


## It's Finally Built

The journey to your dream log home has been marked by years of planning, sweat, a few tears, and months of anticipation. You're almost there. Finish strong with a stain made specifically for logs & timbers. Sashco's Capture® Log Stain promises durable protection and lasting beauty. It delivers performance worthy of the journey that got you here.

- **Excellent elasticity, proven durability** – Capture® Log Stain's unique elastic formula allows it to move freely as your logs move, instead of cracking and peeling like the others. It provides the long-lasting protection you need and creates the dream-worthy look you want.

*Capture's elasticity means greater durability.*



On the left, Capture® Log Stain. On the right, Cabot® Australian Timber Oil. Better elasticity equals greater durability. (Download the Full Capture Competitive Stain Report at [www.sashco.com/products/capture](http://www.sashco.com/products/capture))

- **Maintenance made easy with Cascade® Clear Coat** – Skip the arduous work of completely removing your stain when it needs refreshing. Simply clean the surface, apply Cascade®, and get back to life.
- **Easy water clean-up** – Skin, earth, and nose friendly is always a plus. No harsh chemicals required.
- **Exterior/Interior Use** – Capture® Log Stain is excellent for all of your vertical woodwork, inside and out. It won't hide the grain, but instead brings out its natural glow.

## Do It Right The First Time:

Visit [www.sashco.com/diy/log-home-101](http://www.sashco.com/diy/log-home-101) to:

- Download & read *Keeping the Dream Alive*, Sashco's complete guide to log home finishing and maintenance
- Watch helpful how-to videos
- Chat live with technical experts

Or, call **800-767-5656** Monday-Friday, 6am – 5pm MST to get personalized advice from technical experts.



## Application Instructions

1. **Compatibility counts:** If you are changing from one stain product to another, contact us first. Any product already on the wood that contains waxes, non-drying oils, or silicones can interfere with the adhesion of Capture® Log Stain, just like they interfere with the adhesion of chinking, sealants, and caulks. In these cases, Sashco's Transformation Stain® Log & Timber will be the better choice.
2. **Clean the surface:** Media blast, power wash, or sand wood surfaces using an Osborn®\* brush or 60-80 grit sand paper to remove failing stains, UV-damaged or unsound wood fibers, mill glaze, and other surface contaminants. This creates the best surface for stain adhesion and longevity. If mildew is present, apply Sashco's CPR® in the brightener strength according to the directions, or apply fresh bleach in a 4 parts water to 1 part bleach solution. Allow to sit no longer than 20 minutes, then thoroughly rinse to neutralize the cleaner and prevent degradation of the wood fibers.
3. **Remove fuzz:** For the best appearance, remove felting (wood fuzz) with Osborn® brushes, Sashco's Buffy Pad system, or 60-80 grit sand paper once the wood is dry. Be sure to remove all sawdust once done.
4. **Timing matters:** UV rays from the sun can damage

Follow SashcoInc on:



CAPDATATEC 3-15

# Application Steps

Watch helpful how-to videos of each step in the process at [www.sashco.com/videos](http://www.sashco.com/videos) or [www.youtube.com/SashcoInc](http://www.youtube.com/SashcoInc)

1

Prep the log surfaces using the method that will give you the finished appearance that you desire.



**Corn Cob or Glass Blasting**  
(Recommended method)



**Power Washing**

2

Once the logs are dry, hand finish the log surfaces to remove “felting” from power washing or to lessen the texture caused from media blasting.



**Osborn® Brush**  
(Recommended method)



**Sashco's Buffy Pad™ System or 3M® Non-woven Pad**

3

Remove all saw dust or left over media with a brush, air compressor or shop vac.



**Remove Dust**



**Apply Wood Preservative**

4

Apply a borate wood preservative and insecticide, such as PeneTreat®, according to instructions.



**Spray on stain using a \*Graco® 515 or 313 tip or equivalent.**



**Immediately, vigorously back brush.**

5

Allow time for the PeneTreat® solution to dry, (usually 2-4 days depending on the weather and humidity—check with a moisture meter!) and then spray on—to the point of refusal—one heavy coat of Capture® Log Stain. Coat log ends multiple times to ensure the pores are sealed.

6

Wait until the first coat is dry (4-12 hrs.), then apply a lighter second coat of Capture® Log Stain, brushing out any runs. Follow with 1 coat of Cascade® Clear Coat. (See the Cascade® Info Sheet at [www.sashco.com/products/cascade](http://www.sashco.com/products/cascade) for application details.)

\*Graco®, 3M®, Osborn® and Stay Clean I/E® are registered trademarks of their respective owners.

cleaned wood surfaces in as little as 1 week, resulting in premature failure. Sun damaged wood turns yellow and eventually gray, so if you sand a piece of yellowish wood and it turns whiter, you know that wood has some sun damage; therefore, stain should be applied no more than 2 weeks after wood prep is complete.

- 5. Apply Sashco's Penetreat®:** For additional protection against rot and wood-ingesting insects, apply Penetreat® according to instructions. Allow the wood to dry a minimum of 2-4 days. (Use a moisture meter to check it!)
- 6. Air and surface temperatures matter:** To allow Capture® Log Stain to dry and adhere properly to the wood, apply the product when the forecast is predicting clear, rain-free and snow-free weather, with air and wood surface temperatures of 40° - 90°F (4° - 32°C) both during application and for the rest of the day after it has been applied. (This includes overnight temps!) If rain can't be avoided, protect stained surfaces from direct rainfall for 1-2 days after application. Use a surface thermometer to check surface temps.
- 7. Wood must be dry:** Using a moisture meter, check the wood to make sure it's at or below a 19% moisture content level before staining. Anything higher increases the risk of rot and/or peeling stain.
- 8. Control surface mildew:** To further enhance protection from mildew growth on the surface of the stain, and give added protection from mildew between maintenance coats of Cascade®, add in Stay Clean I/E® mildewcide to each pail of stain.
- 9. Mix it up properly:** Using a squirrel cage type mixer, thoroughly mix the stain, being sure to scrape all pigments off the bottom of the pail. Pails with different lot numbers should be blended together to ensure consistent color. Stir the stain every 10-15 minutes throughout application.
- 10. Spray it on and back brush it in:** Using a Graco® 313 or 515 sprayer tip (or equivalent in a different brand), drench apply the first coat of Capture® Log Stain. Best long-term performance is achieved when the first coat is applied to the point of refusal (meaning the wood won't accept any more stain). Follow behind immediately with vigorous back brushing using large 5-6 in. deck and siding paint brushes on 3-4 ft. long poles. This forces the stain into the pores of the wood and promotes penetration and adhesion.
- 11. Spray it on again:** Allow the first coat to completely dry (4-12 hours, depending on temperature and humidity), then apply a 2nd, lighter coat and brush out any runs.
- 12. Seal it up:** Spray on one heavy coat of Cascade® Clear Coat, brushing out any runs. Capture® Log Stain **must** be top coated with Cascade® for water-resistance and added UV protection.

## Interior Application Tips:

- *Optional:* Apply 1 coat of Symphony® or a water-based sanding sealer prior to staining to even out wood porosity.
- Spray or brush on 1 light coat of Capture® Log Stain. (An additional coat can be applied to get a deeper color but is not necessary for wood protection.)
- Top coat Capture® Log Stain with 1-2 coats of Symphony® interior clear coat. Download the Symphony® info sheet at [www.sashco.com/products/symphony](http://www.sashco.com/products/symphony) for application instructions.

## What's Really Important

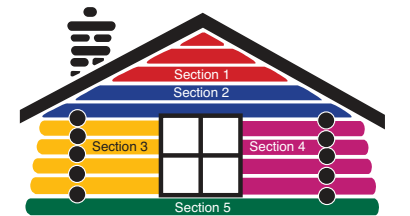
It is well known by painters and stainers everywhere that the single most important factor in the longevity of any staining or painting job is the quality of the prep done before hand. Clean, sound, warm, dry, and textured wood are the five characteristics of a well-prepped surface.

Download *Keeping the Dream Alive*, Sashco's complete guide to log home finishing and maintenance for details on these five factors. [http://www.sashco.com/log/pdfs/Keeping\\_the\\_Dream\\_Alive.pdf](http://www.sashco.com/log/pdfs/Keeping_the_Dream_Alive.pdf)

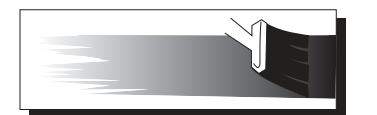
The second most important factor affecting the longevity of stain is the quantity of stain applied to the wood. Don't make the mistake of expecting a light “color coat” misting to last very long. Light mist coats will fail quickly, even with the best stains out there. Applying as much stain as the wood will accept on the first coat, while back brushing and forcing it into the wood, results in dramatically improved performance and longevity. This includes filling any cracks or checks in the wood with stain! The first coat is the only time when the stain can penetrate into the wood. Any coats applied after that are only surface coats, so they can go on much lighter.

See proper staining in action! Watch the video at <http://bit.ly/1BOuB7L>

**Tip:** Work horizontally. Plan to apply Sashco's Capture® to one wall at a time, starting at the top and working completely across 3-4 logs high. When the top 3-4 logs are stained, move down the wall to the next 3-4 logs. Continue in a similar pattern to the bottom of the wall, working around doors and windows as shown in the diagram. Clean any drips that may get on lower logs to avoid overlap marks. Capture® Log Stain dries very quickly so it's important to keep a “wet edge”, without stopping, until you reach a natural break in the wall surface. If stopping in the middle of the log is necessary, simply “feather out” the stain, trailing it off into nothing as shown in the graphic above.



For best results, stain in sections as shown above.



Feathering Technique, use only if stopping in the middle of a log is unavoidable.

## Maintenance

Maintenance is a must, but it needn't be a big production every time. Good news! With Capture® Log Stain, maintenance is easy. Skip the arduous work of completely removing your stain when it needs refreshing.

- **When the stain is in good condition:** Simply clean the surface (a hose fitted with a high pressure nozzle is all that's needed, or you can do a light power wash) and apply a new coat of Cascade®. You'll bring back that freshly-stained look and renew the protection against UV damage and moisture in one weekend.